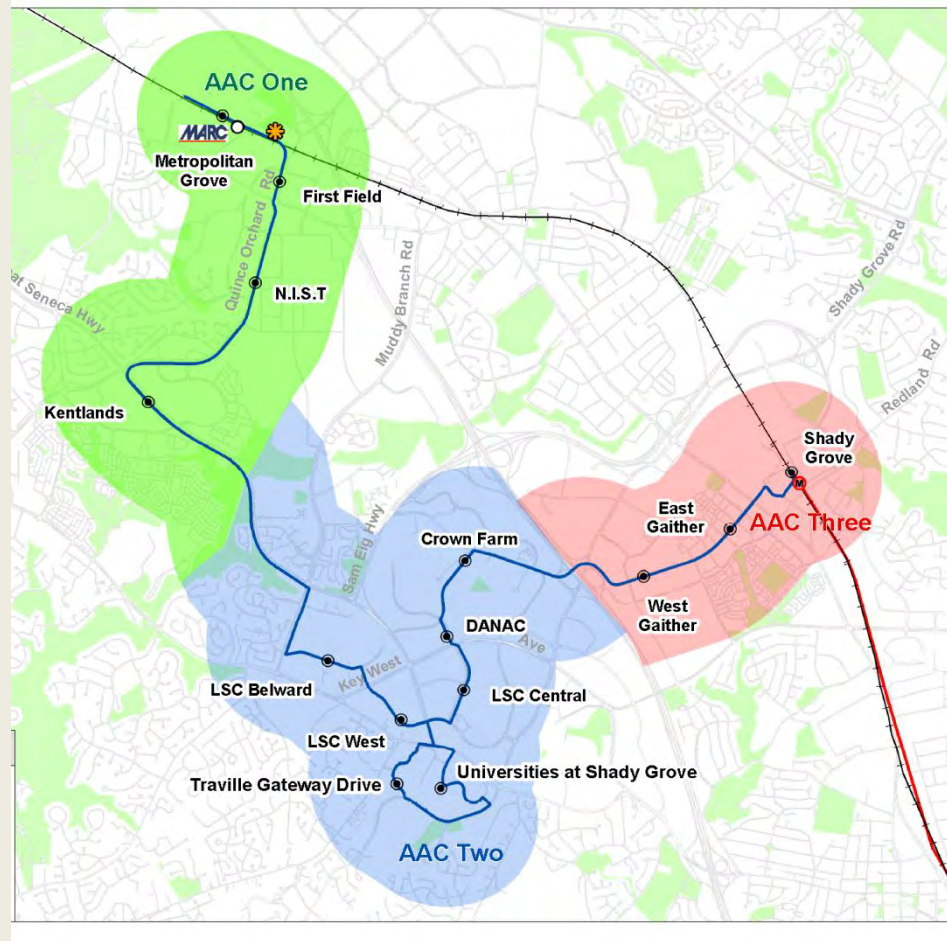




# Corridor Cities Transitway

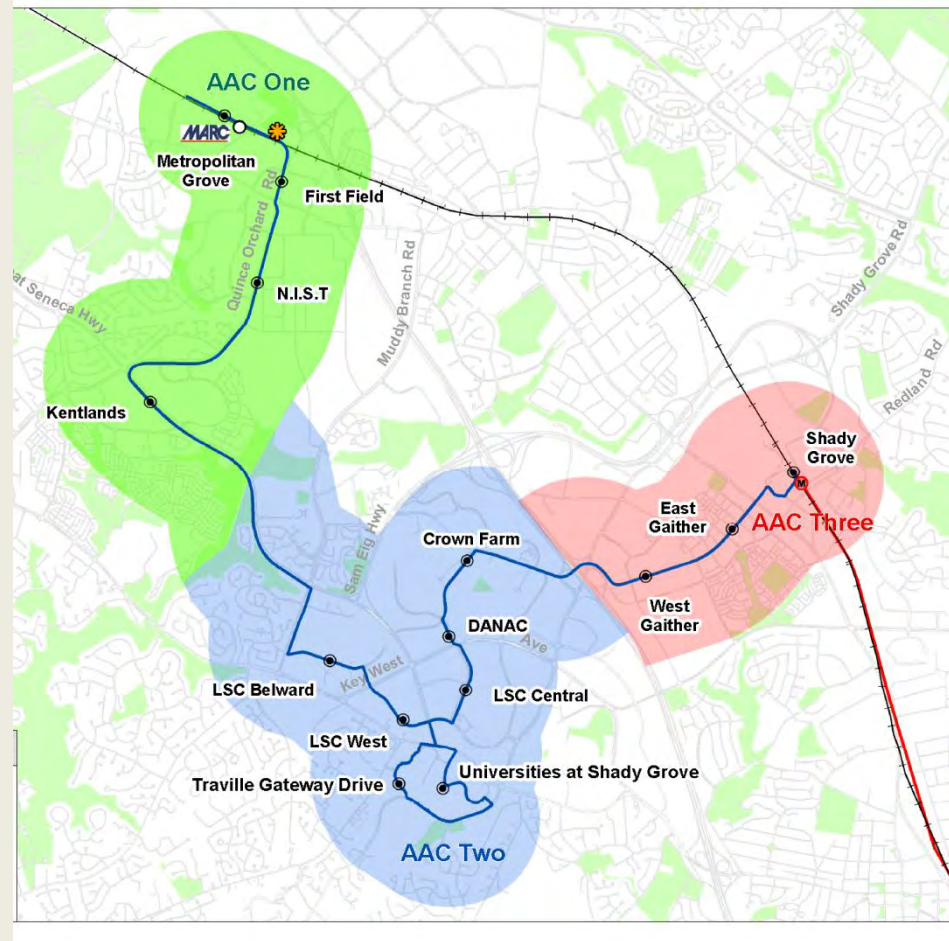
Area Advisory  
Committee  
Kick-off Event  
April 5, 2014





# Topics

- History
- Community
- Modality
- Concurrency







# CCT History

## First Area Advisory Committee Meeting



FIRST MEETING—MAY 16, 1927. The Maryland-National Capital Park and Planning Commission. From left to right; the late Senator Robert Hilton, Commissioner (Montgomery County); the late George P. Hoover, Commissioner (Montgomery County); J. Bond Smith, General Counsel; the late Irvin Owings, Chairman (Prince Georges County); the late Thomas E. Hampton, Secretary-Treasurer; T. Howard Duckett, Commissioner (Prince Georges County), and P. Blair Lee, Commissioner (Montgomery County).

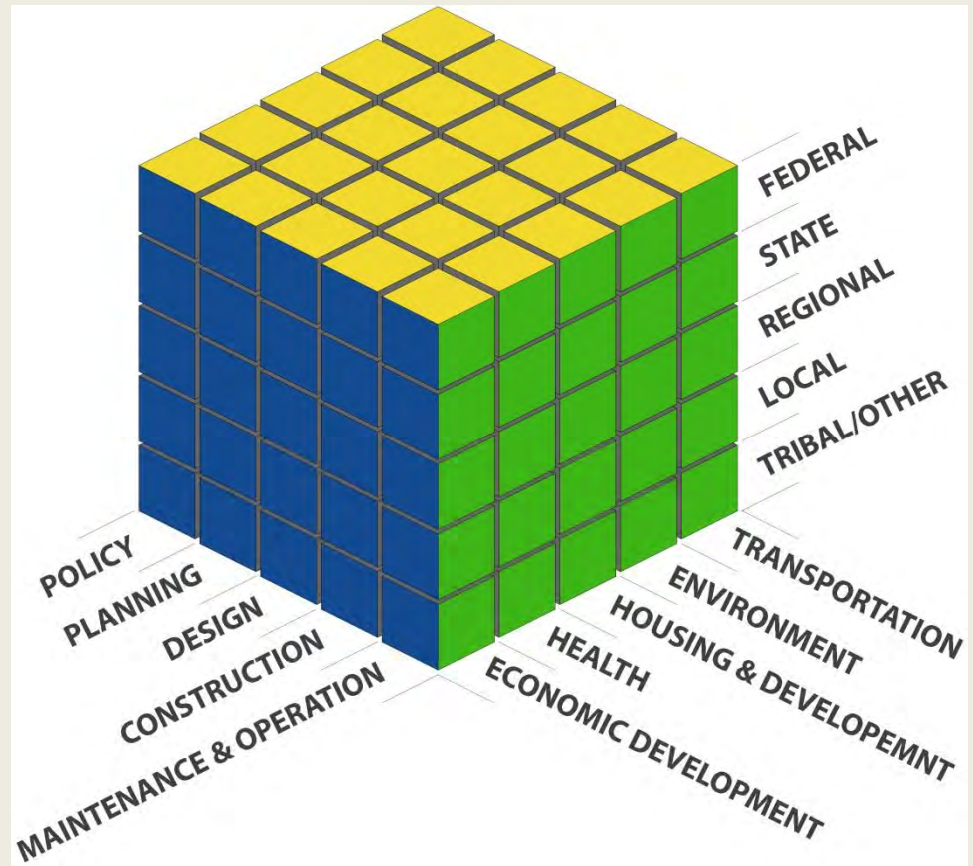




# CCT History

Corridor Cities  
coordination

- Regional, state, local agencies
- Stakeholders and constituents
- Interest groups







# CCT History

Corridor Cities  
coordination

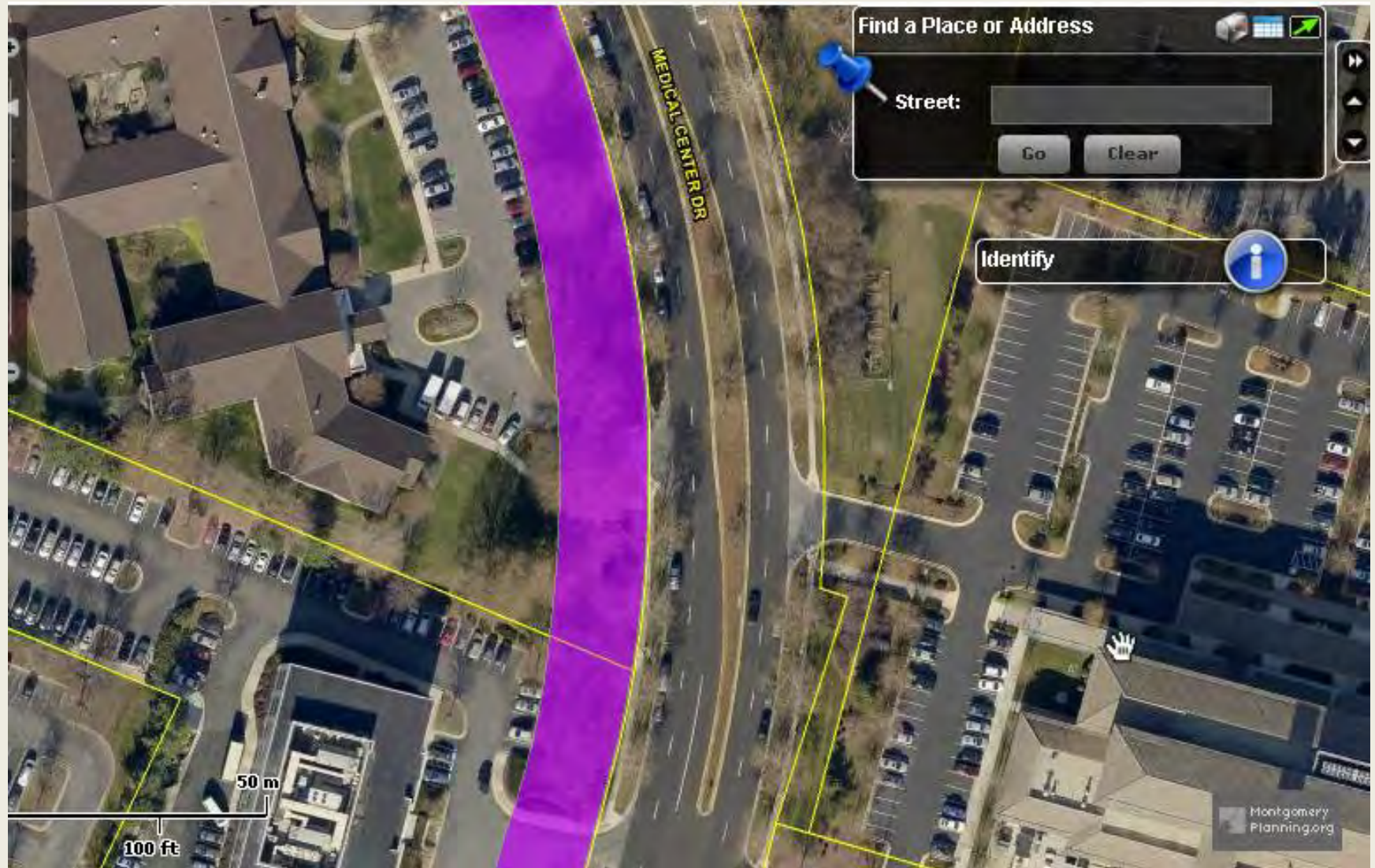
- Regional, state, local agencies
- Stakeholders and constituents
- Interest groups







# CCT History



Source: [http://www.montgomeryplanning.org/gis/interactive/transitway\\_row.shtm](http://www.montgomeryplanning.org/gis/interactive/transitway_row.shtm)







# One million years BC

(...before  
corridor..)





## CCT History

1950 to 1970

- Wedges and Corridors planning
- US 240
- County population triples – to 500K



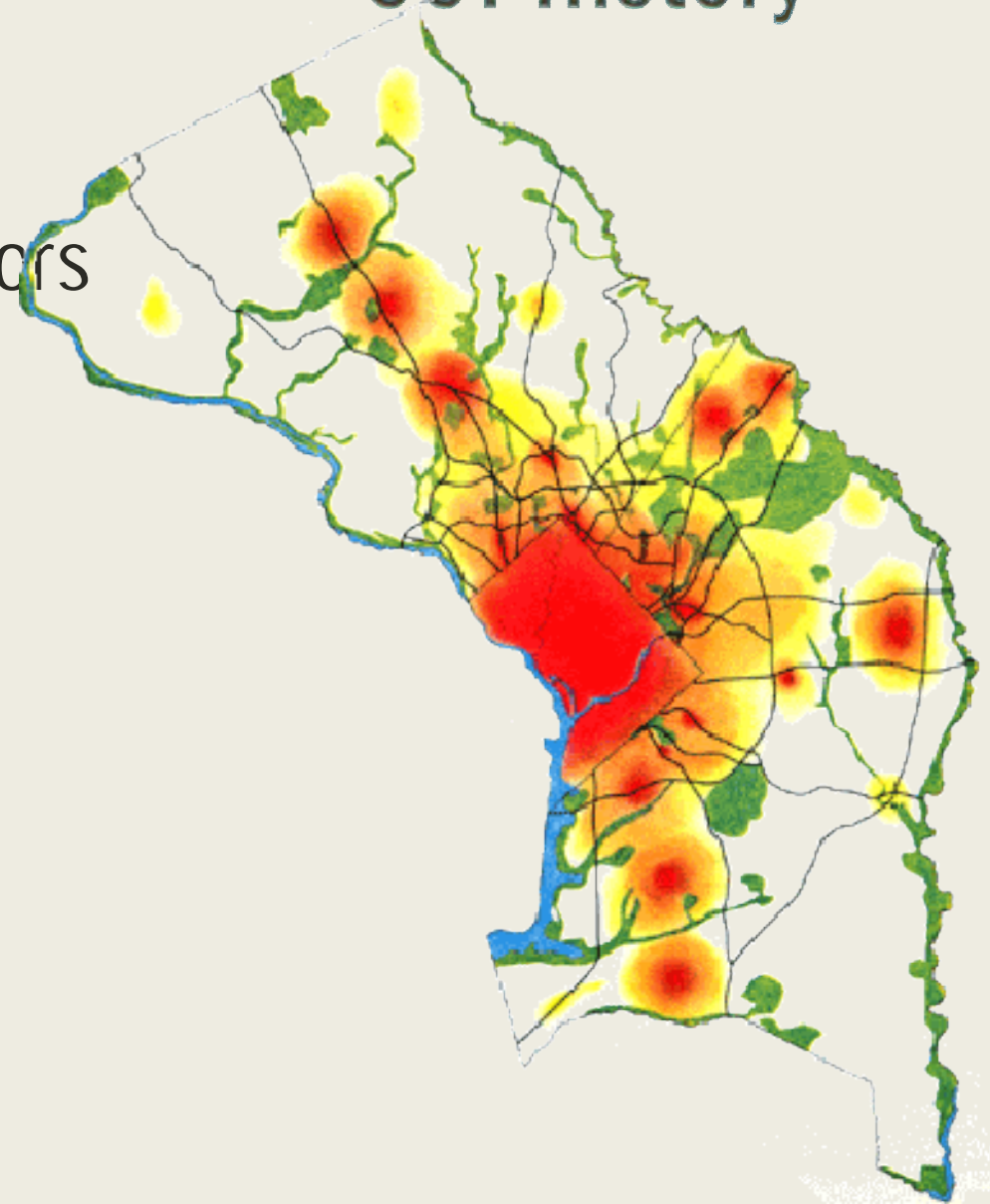




# CCT History

1950 to 1970

- Wedges and Corridors planning
- US 240
- County population triples – to 500K

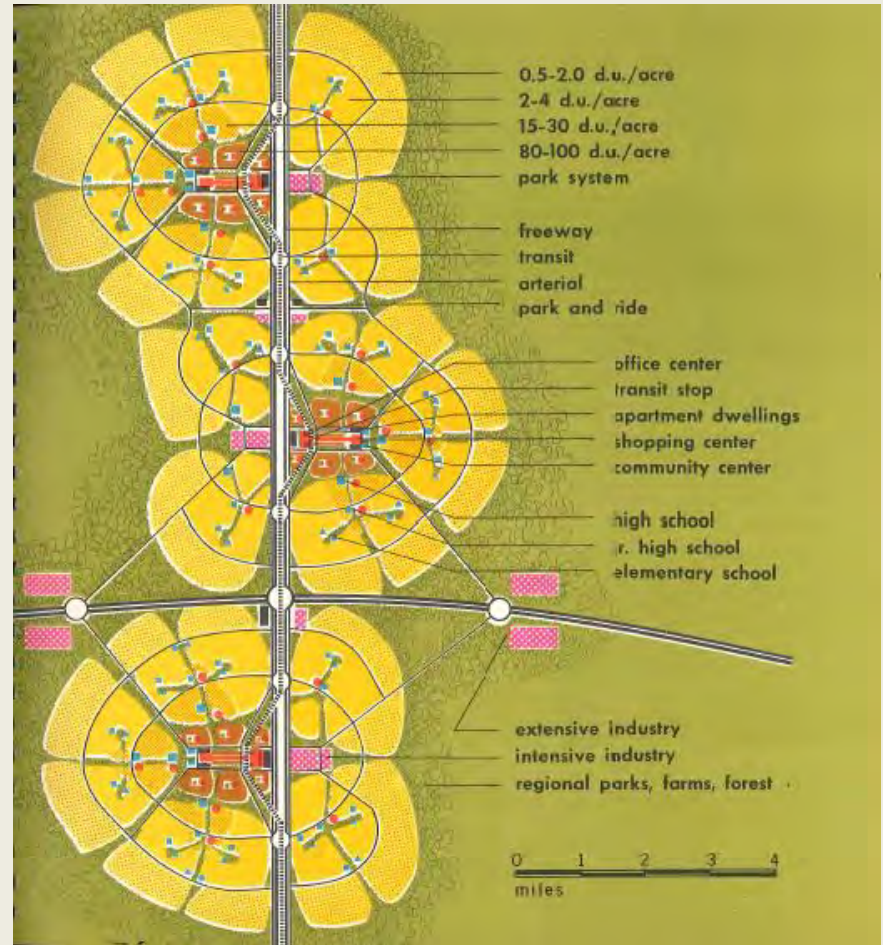




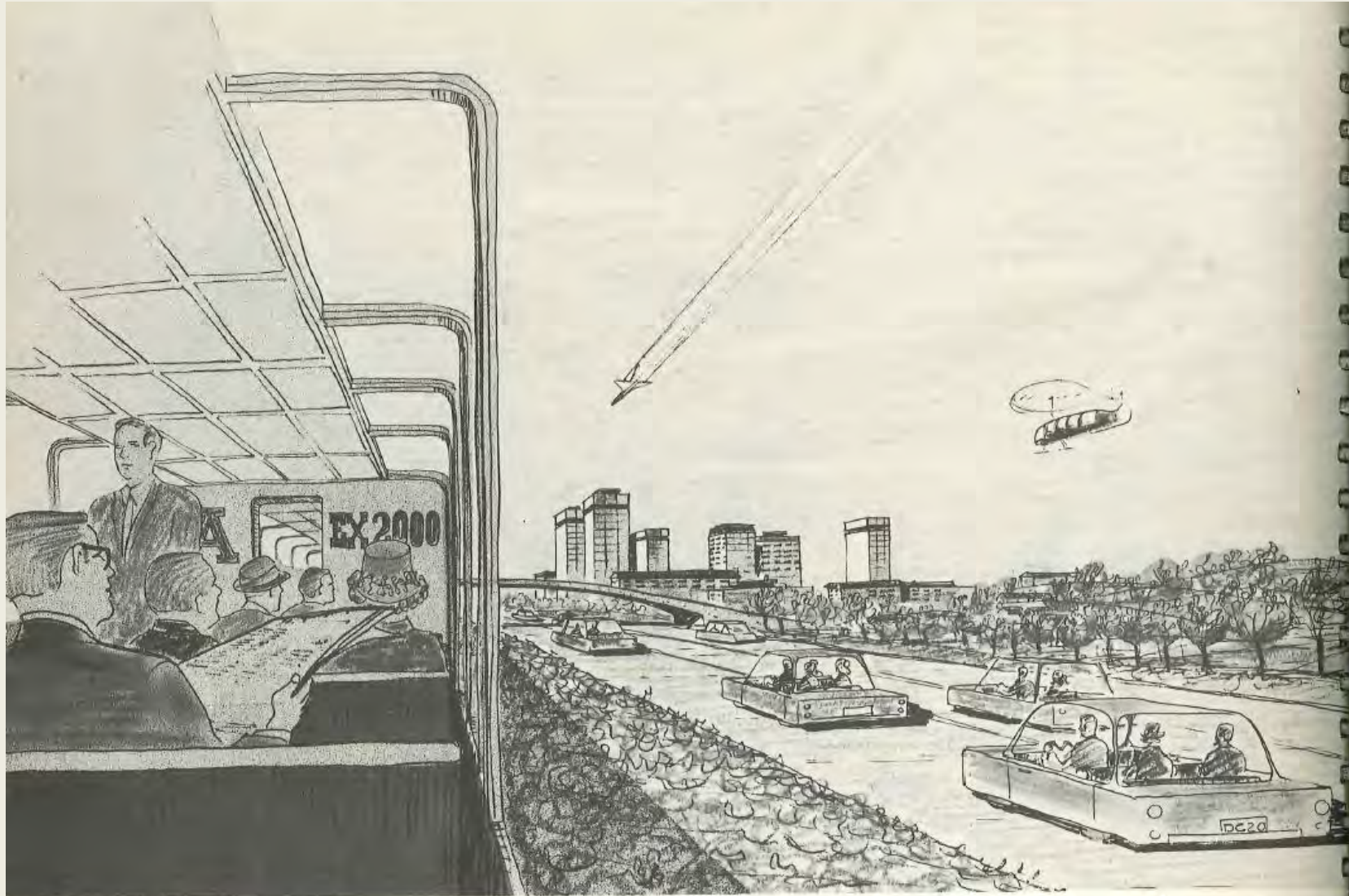
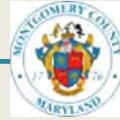
# CCT History

1950 to 1970

- Wedges and Corridors planning
- US 240
- County population triples – to 500K







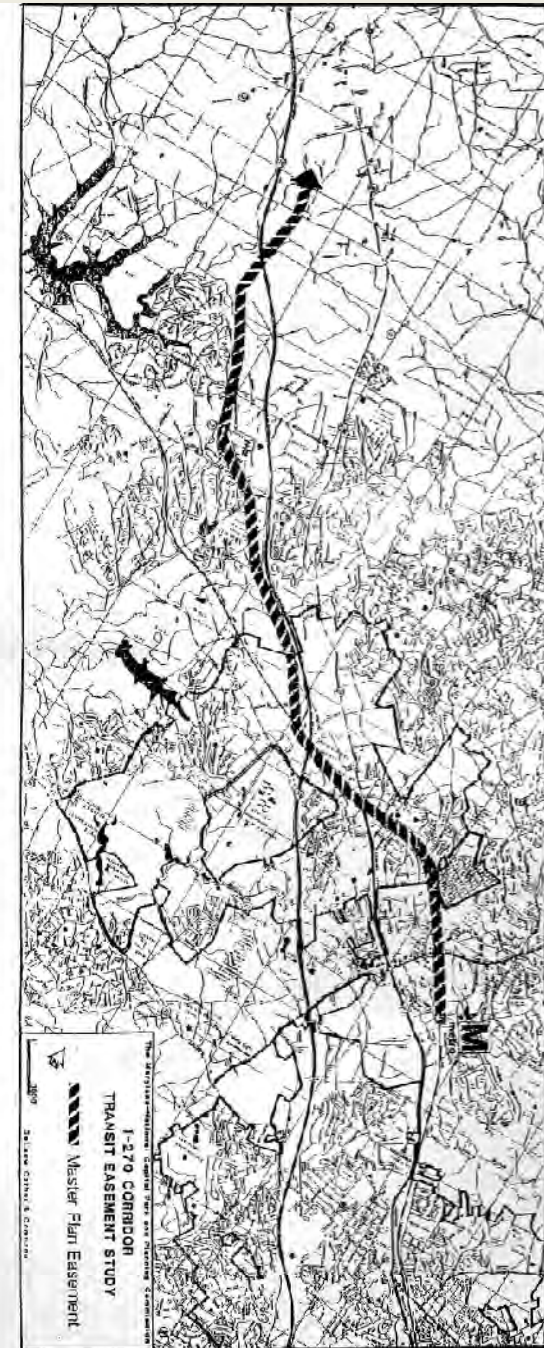
*For the rail commuter traveling along a typical transportation corridor, the view would alternate between pleasant areas of green countryside and clusters of development. Shown here is the exciting approach to one of the new communities, identified by the cluster of office and residential towers at its core.*





## 1970 to 1990

- Metrorail
- MARC
- Corridor Cities plans
  - Gaithersburg 1985
  - Germantown 1989
  - Shady Grove 1990

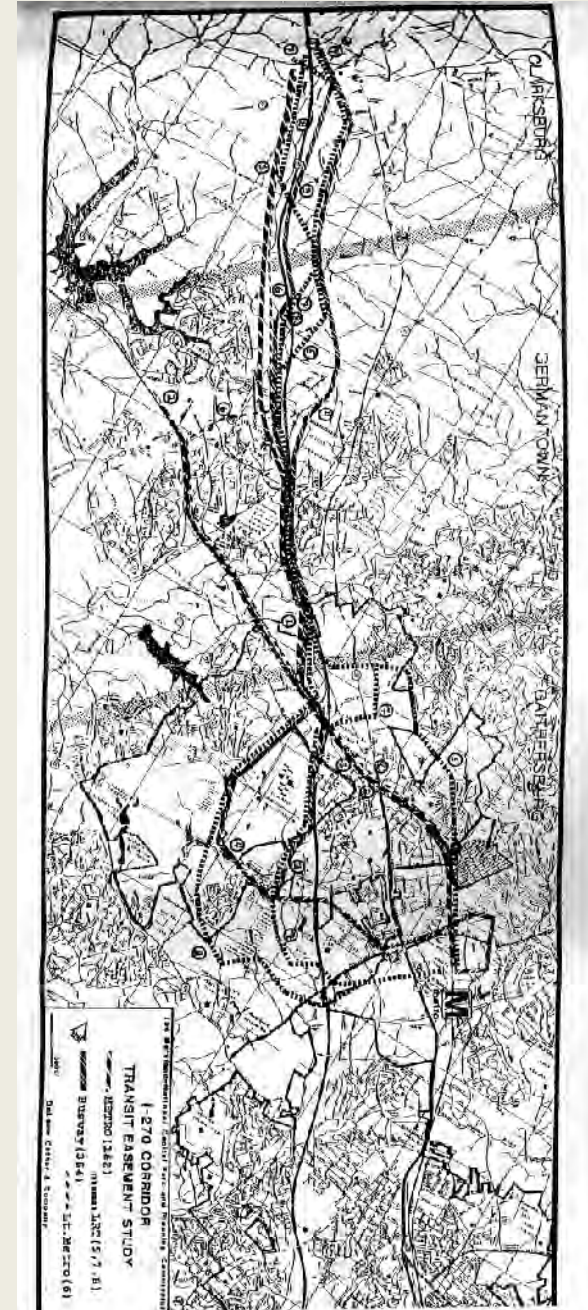






## 1990s

- CCT Studies
  - Alignments 1990, 91
  - Feasibility 1993
  - Transitway Network 1995
  - CCT North 1998
  - Transportation Policy Report 1998

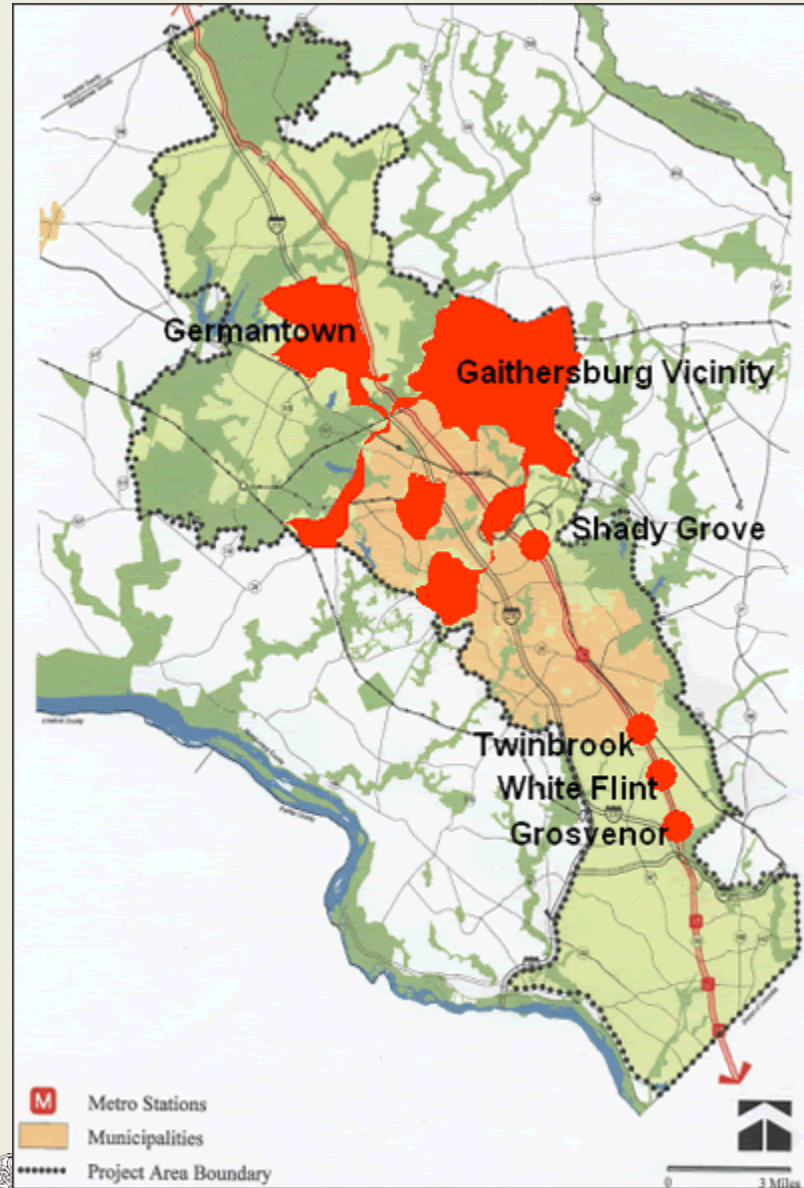




# CCT History

2000s

- I-270 widening
- MARC
- Corridor Cities plans
  - Shady Grove 2006
  - Germantown 2008
  - Twinbrook 2009
  - White Flint 2010
  - GSSC 2010



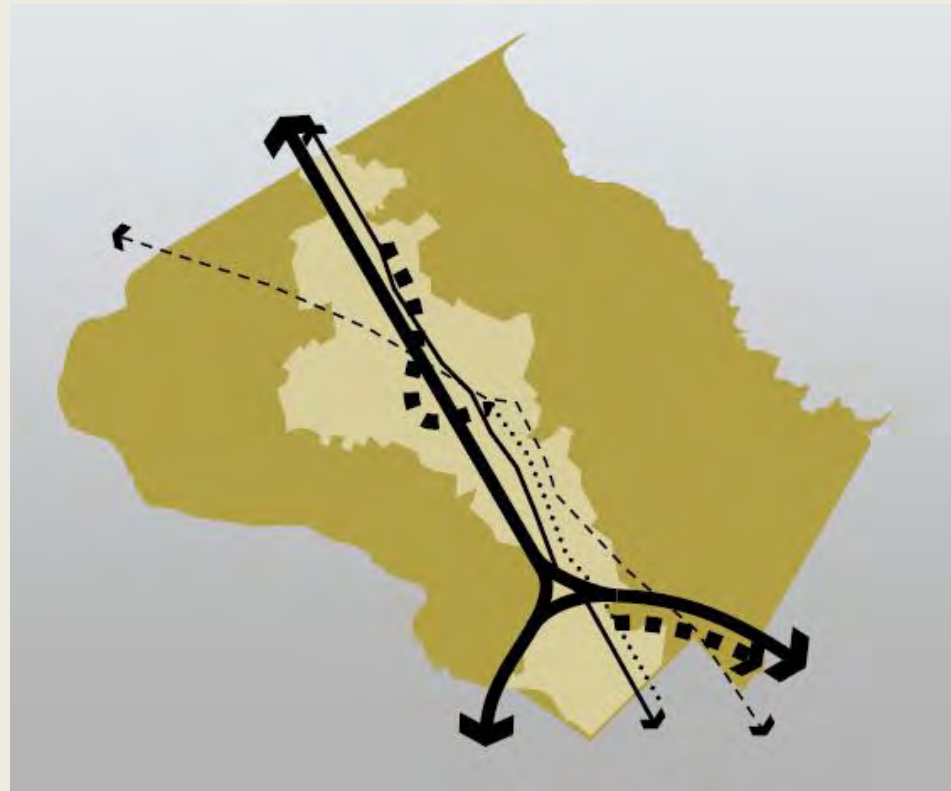




## CCT Role

### Framing the I-270 corridor

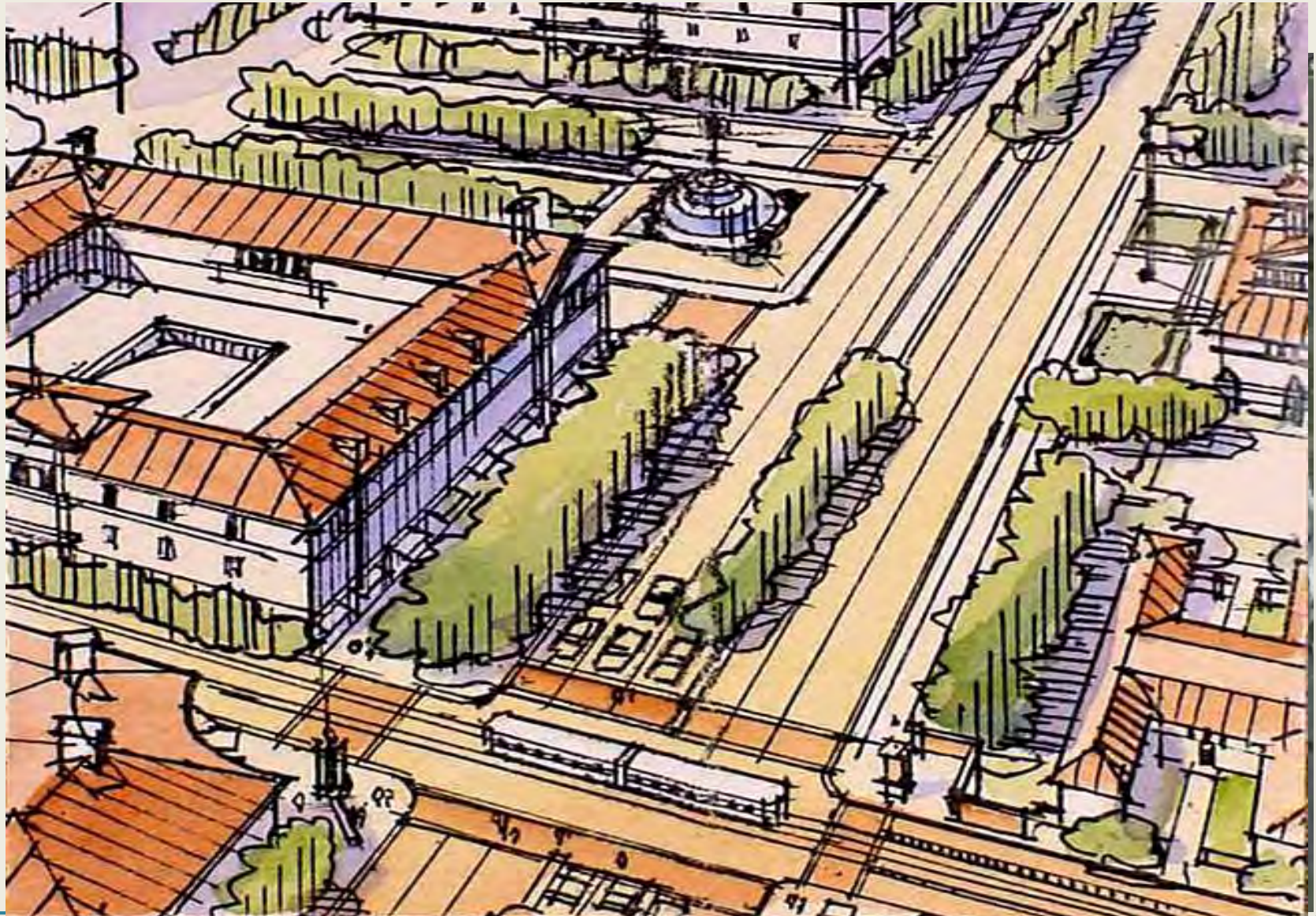
- Compact land development
- Mixed uses
- Walkable communities
- Radial travel patterns
- Intra-corridor travel







# King Farm







# Crown Farm







# Crown Farm



Source: [Greater Greater Washington](#):



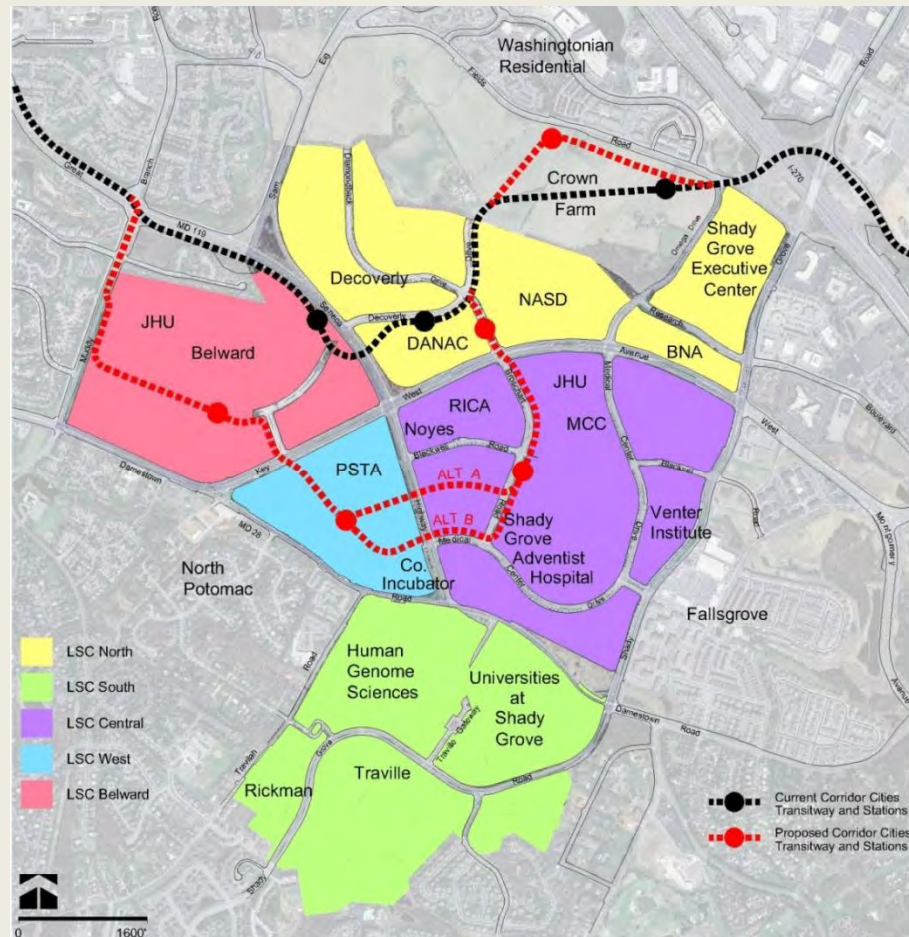




# Gaithersburg (GSSC)

## Alignment

- Function – serve local uses
- Form – fit to planned community street grids





# Gaithersburg (GSSC)







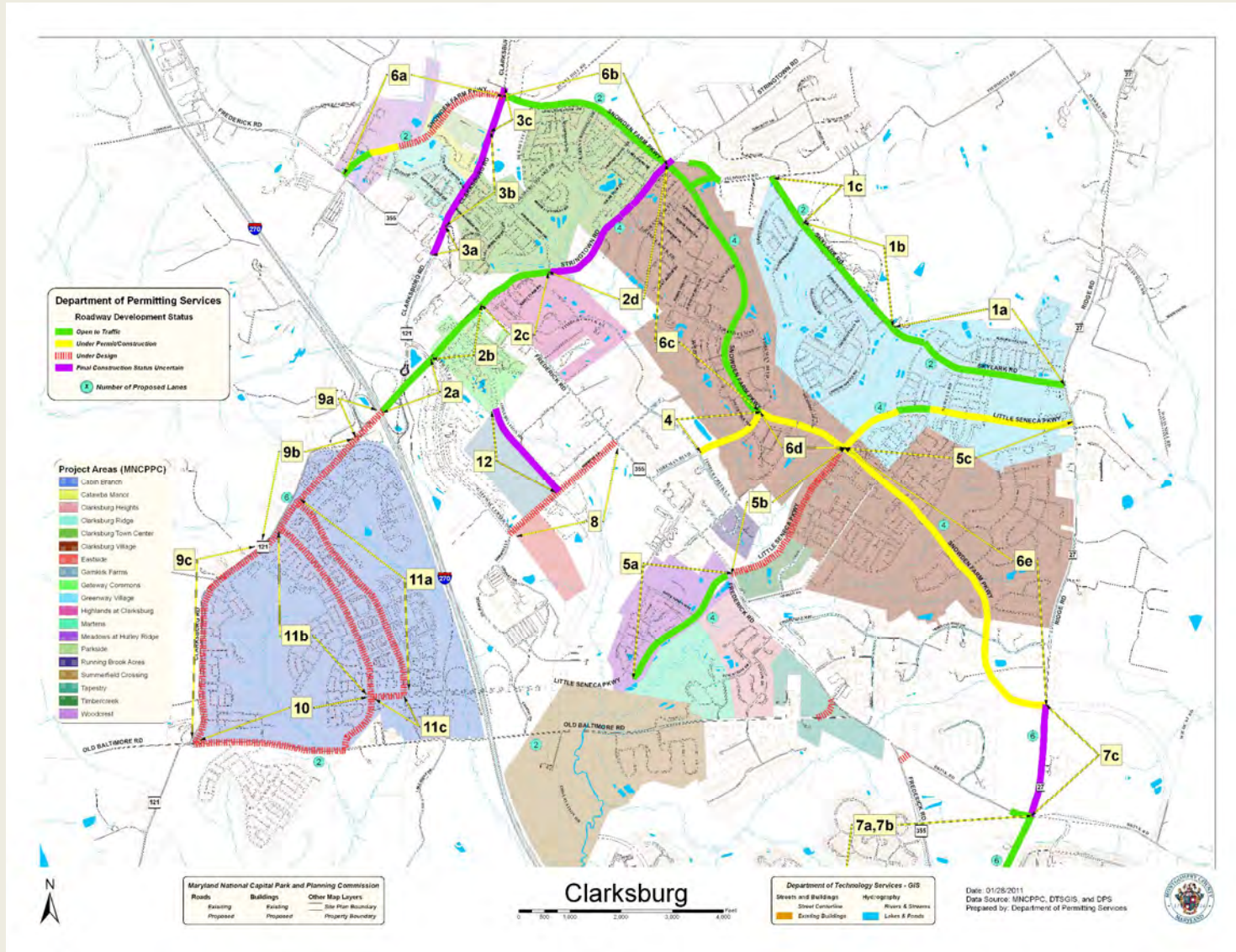
# Germantown







# Clarksburg



FREDERICK

OF COLUMBIA

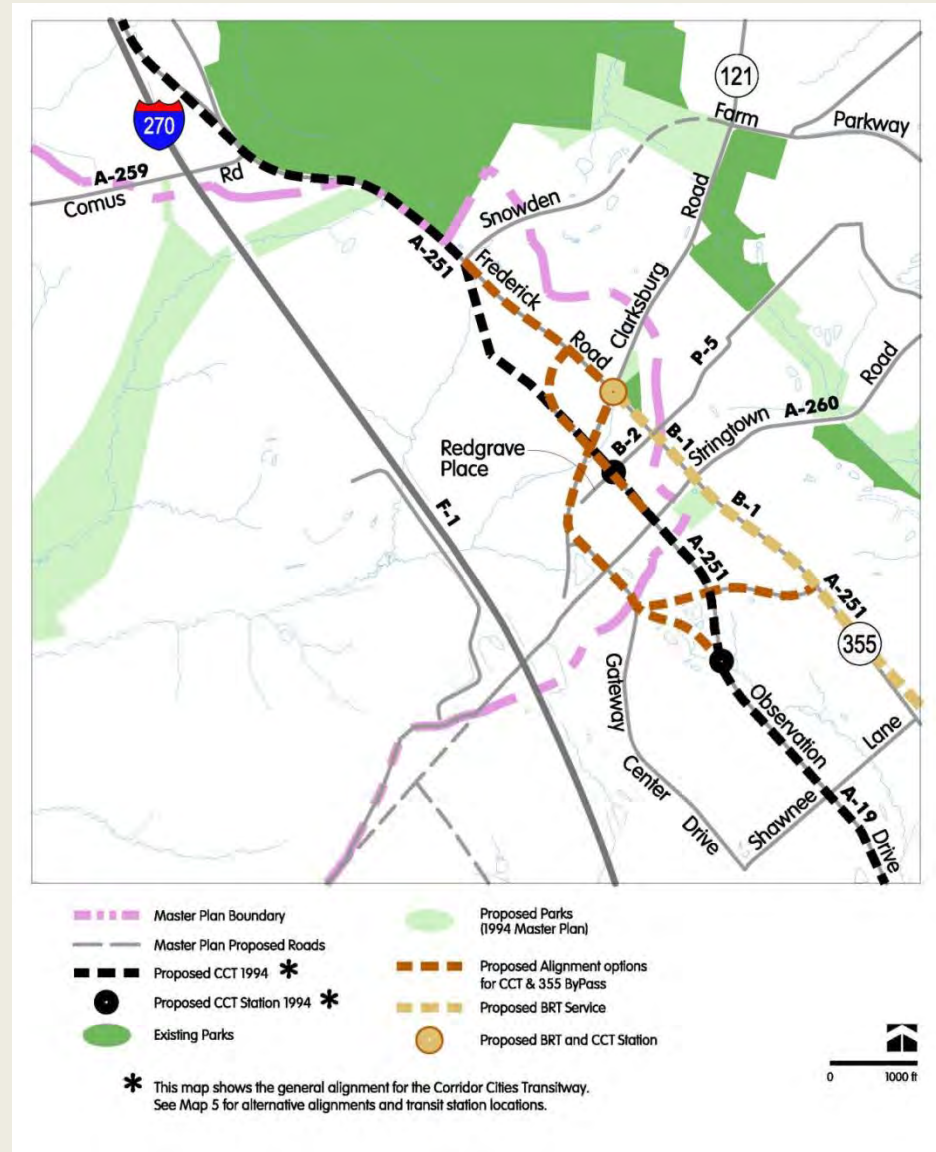






# Clarksburg

Ten Mile Creek Plan amendment  
 Seeking sustainability in balance of environmental, economic, community concerns





# CCT Mode

Evolving public image:

Rail



Bus







# CCT Mode

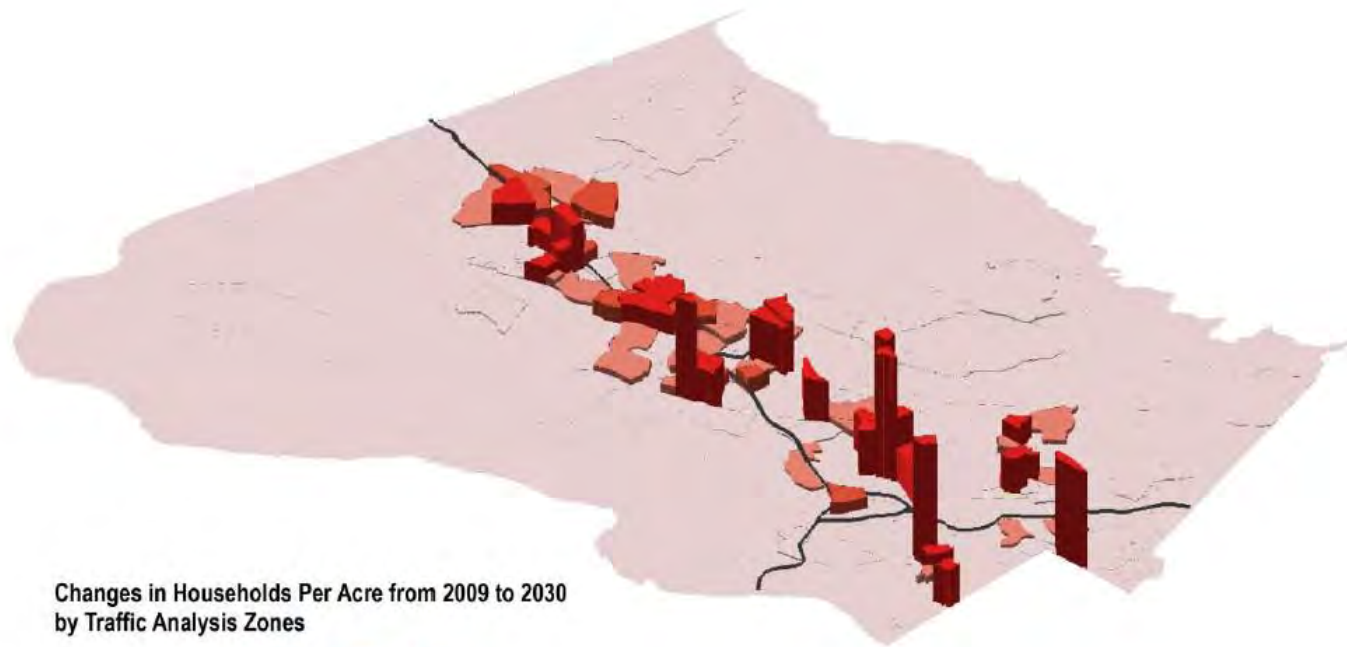
Map 1 Recommended BRT Corridors



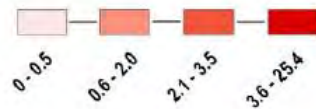


# Staging

**Households Per Acre in Montgomery County**  
2009 - 2030 Growth Estimates by Traffic Analysis Zones



**Changes in Households Per Acre from 2009 to 2030**  
by Traffic Analysis Zones



Synchronizing public and private sector investments

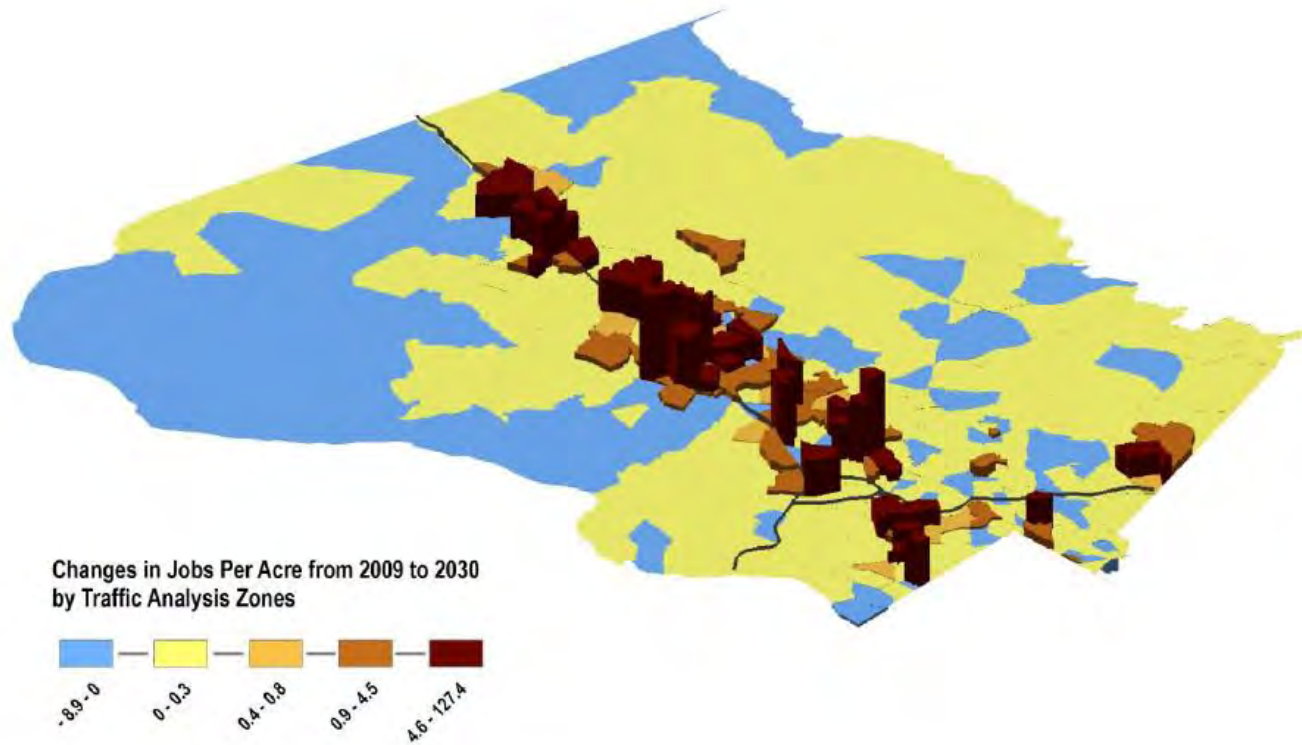






# Staging

**Jobs Per Acre in Montgomery County**  
2009 - 2030 Growth Estimates by Traffic Analysis Zones



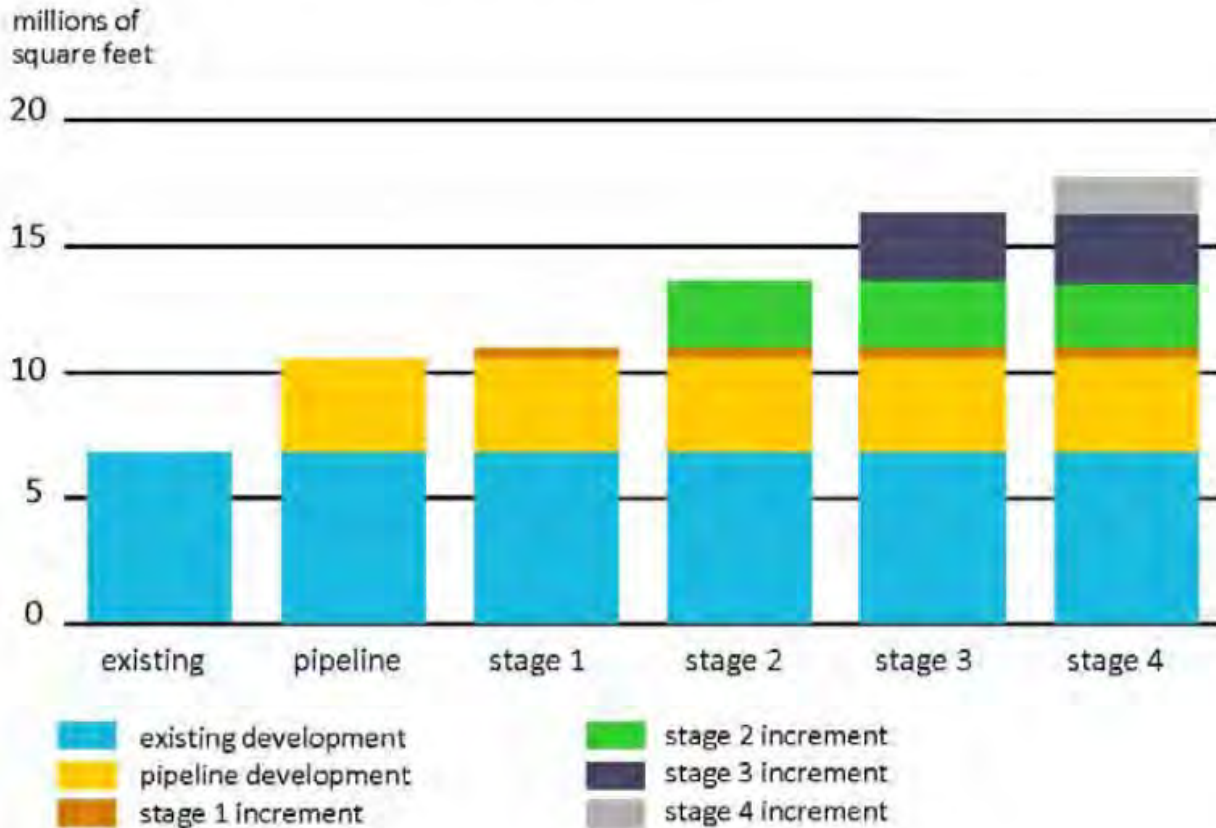
Synchronizing public and private sector investments





# Staging

table 3 staging of commercial development



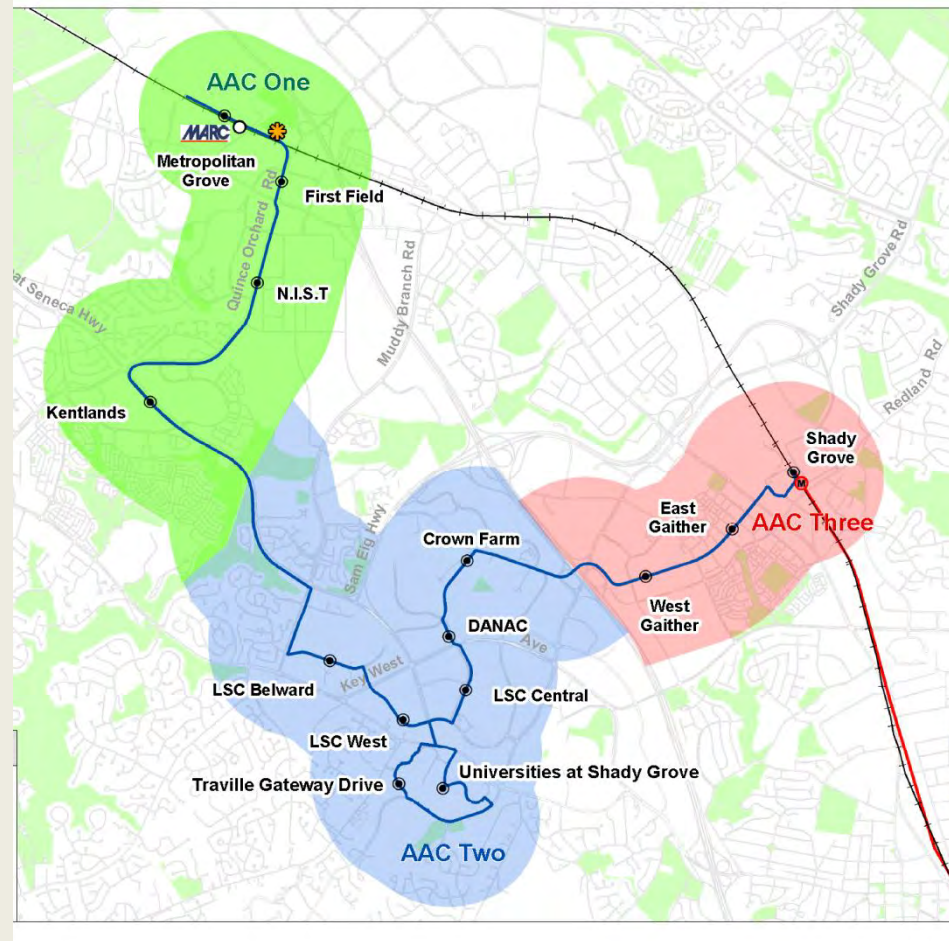
Synchronizing public and private sector investments







# Questions/comments



Dan Hardy  
Renaissance Planning Group  
703-776-9922  
[dhardy@ciesthatwork.com](mailto:dhardy@ciesthatwork.com)

